

## Tynn #4

### Sweater with Yoke

**Sizes:** (1) 2 (4) 6 (8) years

**Finished measurements:**

**Chest width:** (58) 62 (67) 71 (76) cm

**Full length:** (34) 38 (42) 45 (48) cm

**Sleeve length:** (21) 24 (28) 31 (35) cm

**Yarn:** Tynn Merinoull from Sandnes (100% merino wool) 50 g = approx.. 175 m

**Yarn alternative:** Mini Alpakka, Sisu, Mini Duett, Alpakka Silke, Mandarin Petit  
Note! Yarn requirement may differ for alternative yarn.

#### Yarn required:

Natural white #1015: (3) 3 (4) 4 (5) balls

Grey #5830: 2 balls for all sizes

Turquoise #6543: 1 ball for all sizes

Blue #6071: 1 ball or remnant for all sizes

**Knitting needles:** Double pointed and circular 2.5 mm and 3 mm.

**Knitting tension:** 27 sts st st with 3 mm ndls = 10 cm. Check your tension and change ndl size if necessary.

**Back and Front:** With white and 2.5 mm circular ndls cast on (156) 168 (180) 192 (204) sts. Work circular. Work ribbing [k2, p2] for (3) 4 (4) 5 (5) cm. Insert a thread marker at each side with (78) 84 (90) 96 (102) sts for each the back and the front. Change to 3 mm ndls. Work st st until the garment meas (19) 23 (26) 29 (31) cm. Work pattern from **diagram A** and on the last row cast off 10 armhole sts at each side = 5 sts each side of both markers. Put aside while working sleeves.

**Sleeve:** With white and 2.5 mm double pointed ndls cast on (40) 44 (44) 48 (48) sts. Work ribbing [k2, p2] for (3) 4 (4) 5 (5) cm. Change to 3 mm double pointed ndls and work st st. Mark the start of the row with a thread = underarm. When the sleeve meas 6 cm inc 1 st each side of the marker. Repeat these inc every (3) 3.5 (3.5) 4 (4) cm until there are (50) 54 (56) 60 (62) sts on the ndls. Work until sleeve meas (18) 21 (25) 28 (32) cm, or 3 cm less than desired length. Work pattern from diagram A and count out from the middle of the sleeve to find how the pattern starts. On the last row cast off 10 sts for armhole = 5 sts each side of underarm marker. Put aside. Work the other sleeve the same.

**Yoke:** Transfer sleeve sts to the garment ndl, placing one sleeve above each armhole cast-off. There are now (216) 236 (252) 272 (288) sts on the ndl. Insert a marker at one back junction between sleeve and back. Start rows here. Work pattern from **diagram B**, and on the first row adjust sts to (216) 234 (252) 270 (288) sts.

Continue working the diagram, and dec at arrows as follows:

On row 10 dec 36 sts evenly spaced around = (180) 198 (216) 234 (252) sts rem.

On row 31 dec (40) 46 (48) 54 (54) sts evenly spaced around = (140) 152 (168) 180 (198) sts rem.

Omit for sizes (1) 2 the part marked by bracket to the right.

The pattern marked by bracket to the left are not worked for sizes (4) 6 yrs.

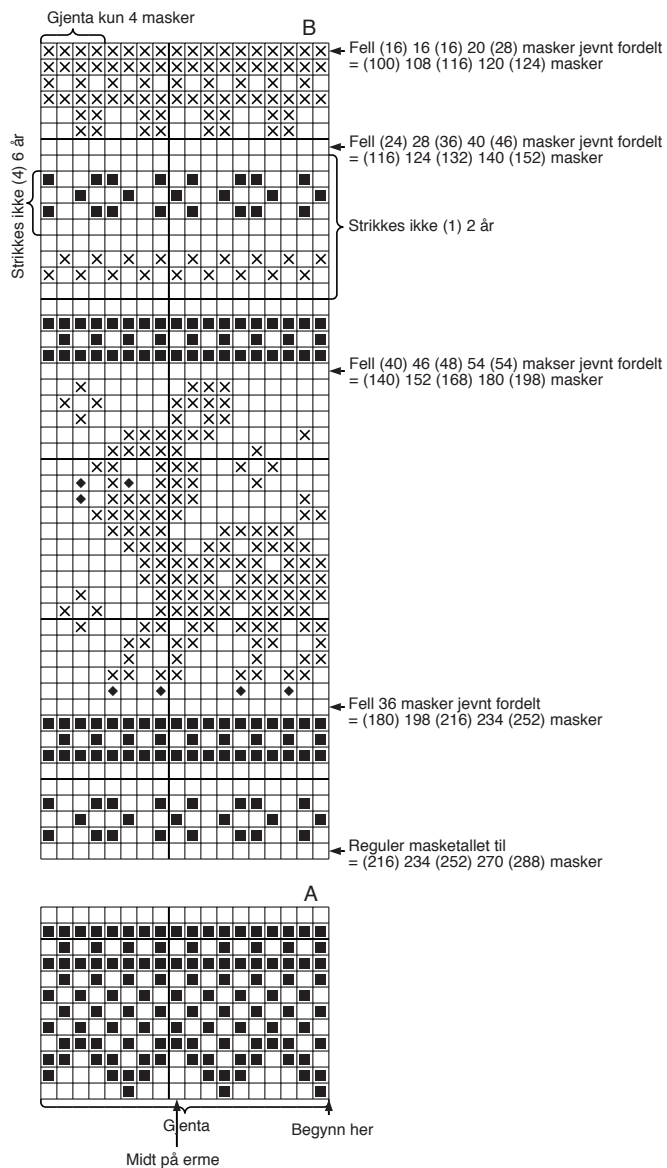
On row 45 of the diagram dec (24) 28 (36) 40 (46) sts evenly spaced around = (116) 124 (132) 140 (152) sts rem.

On the last row dec (16) 16 (16) 20 (28) sts evenly spaced around = (100) 108 (116) 120 (124) sts rem.

**Note!** The diagram is repeated in the width (18 sts), except the last pattern, where only the last 4 sts are repeated.

**Neckband:** Change to double pointed 2.5 mm ndls and turquoise. Work ribbing [k1, p1] around for (2) 2 (2) 3 (3) cm. Cast off evenly rib-wise.

Sew armhole openings. Embroider noses, eyes and hooves with duplicate stitch.



- Kitt
- Støvet turkis
- Lys grå
- Gråblå, strikk snute og øye med kitt, og broder maskesting med gråblå under montering

= natural white

= turquoise

= grey

= blue. Work these sts with white, then embroider duplicate stitch on top with blue.

Begynn her = start here. Gjenta = repeat, midt på erme = middle of sleeve,

Strikes ikke = omit